

Confined Spaces

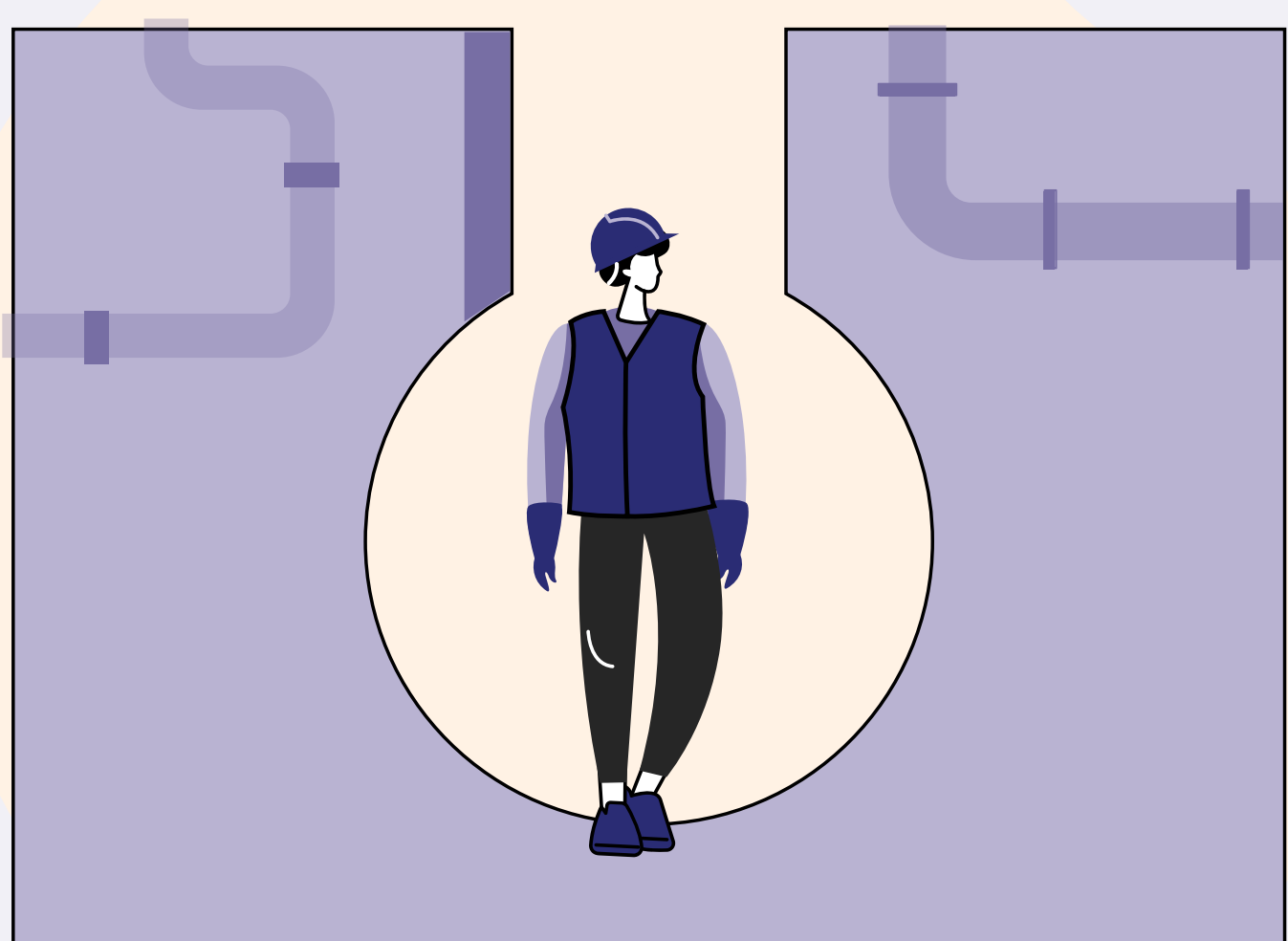
by Stacey G. and Bob N.

BEFORE THE JOB

- Verify there are **no practicable alternatives to entry**.
- Isolate all sources of energy as per **LO(TO)²** protocols.
- Testing the atmosphere inside by **Authorized Gas Tester**. Only enter when it's safe.
- All **Confined Space** with serious safety or health hazard (e.g.: potentially hazardous atmosphere, obstacles that limit the easy movement inside) requires specific **Permit to Work**.
- All entrants to a Confined Space must have valid **authorization and competency assessment**.
- **Specific Rescue Plan** must be in place for recovery and evacuation of personnel in case of an accident inside the Confined Space.
- Ensure any **unauthorized entry** is **prevented** in all defined Confined spaces.

DURING THE JOB

- Perform **regular monitoring** on "high risk" hazardous atmospheric conditions.
- **Attendant** is **assigned**, outside the confined space and with constant contact with the workers inside.
- **Restate ingress control** to the Confined Space Area once the work is finished.



It is vital that we control and monitor the atmosphere. Most confined spaces have one way in/out and awkward or tight means of entry/egress. **ALWAYS** have a rescue plan!