

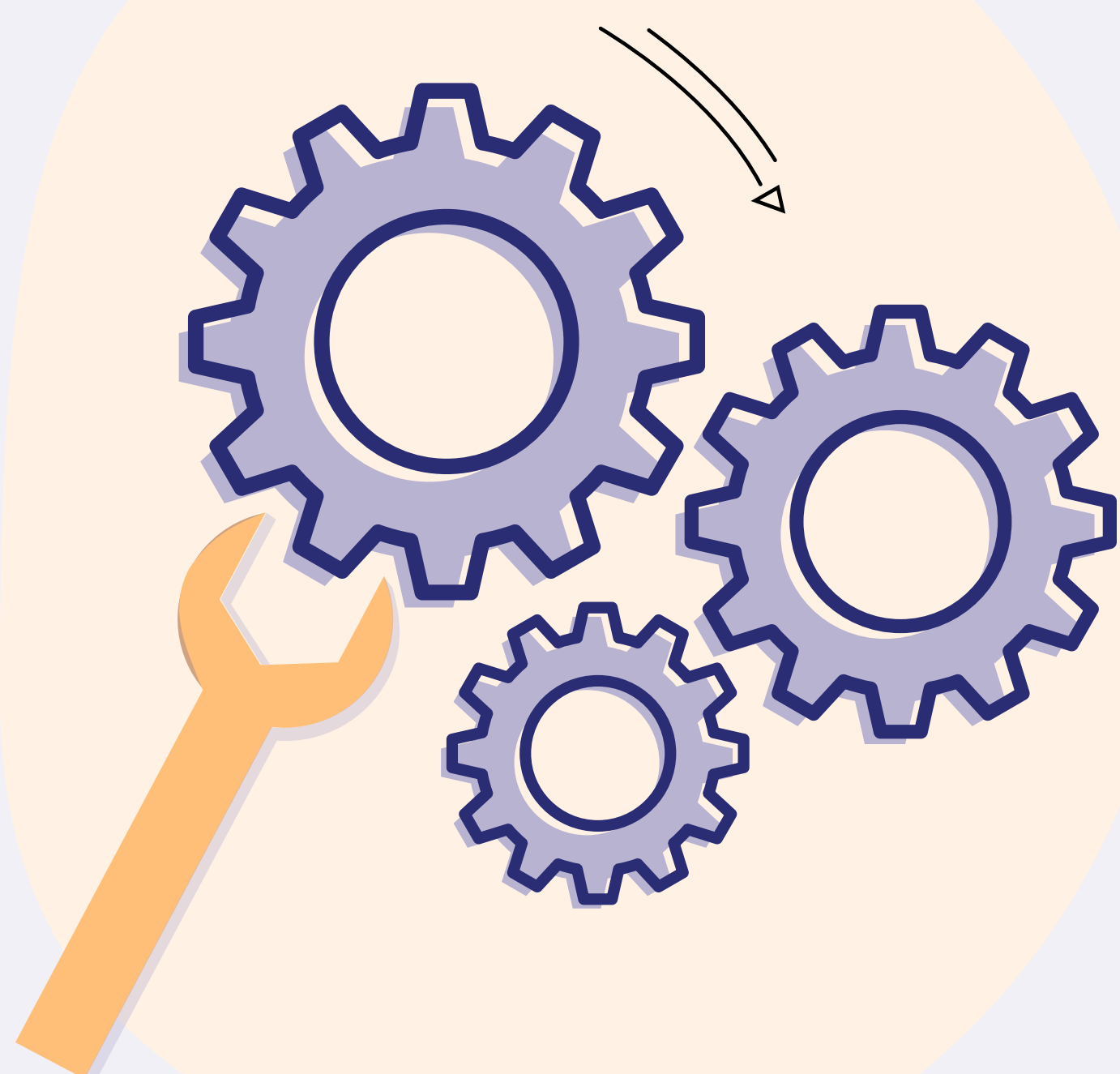
Moving Machinery

BEFORE USING ANY TOOL OR MACHINE

- Make sure the **guarding** is in **good working condition**.
- Make sure all **tools** are in **good working condition** and have been **regularly maintained** (check the records).
- Confirm that entry into operational area of the mobile or energized equipment is properly isolated through **LO(TO)²** during its operation.
- Only use machines and tools that you have been **trained to use**.
- Make sure it is the **right tool** for the job and it is **clean and free from any debris** that could create a hazard.
- Always operate machinery according to the available **manufacturer's instructions**.
- Make sure all other team members are at **safe distance** away from the machine when you're operating it.
- **NEVER** remove machine guarding and protections.

AFTER THE WORK

- Stay in a **safe area** where the equipment will not strike or trap you or you could be splashed or hit by materials, fluids or emissions.
- Follow the **Pre-Startup procedures** and instructions with the person in charge of the machine or equipment.
- Ensure **all guarding and protection systems** are **in place** before restarting.



Avoid the risks associated with the movement and energy that produces them (e.g.: electrical, pneumatic, hydraulic, thermal, kinetic, potential, Mechanical)